



Total Solution Provider in Saw Device

SA70K1F

70.0 MHz IF SAW Filter
18.45 MHz Bandwidth
Revision 1: 29. Oct. 2007



- Electrical Characteristics
 - Package Dimensions
 - Testing Environment
-

SAWNICS Inc.

460 Cheonheung-ri, Seonggeo-eup, Cheonan-si, Chungcheongnam-do, 330-836 / Korea.
Tel: +82 41 550 9372 / Fax: +82 41 550 9399 / www.sawnics.com

□ Electrical Characteristics

Maximum Ratings

Parameters Description	Unit	Minimum	Typical	Maximum
Operation Temperature Range	°C	-30	-	80
Storage Temperature Range	°C	-40	-	85
Maximum DC Voltage	V	-	-	10
Maximum Input Power	dBm	-	-	10
Source Impedance (single ended) ⁽¹⁾	Ω	-	50	-
Load Impedance (single ended) ⁽¹⁾	Ω	-	50	-
Package type & size	F			
Length x Width	mm ²	-	34.7 x 12.6	-
Height	mm	-	-	5.05

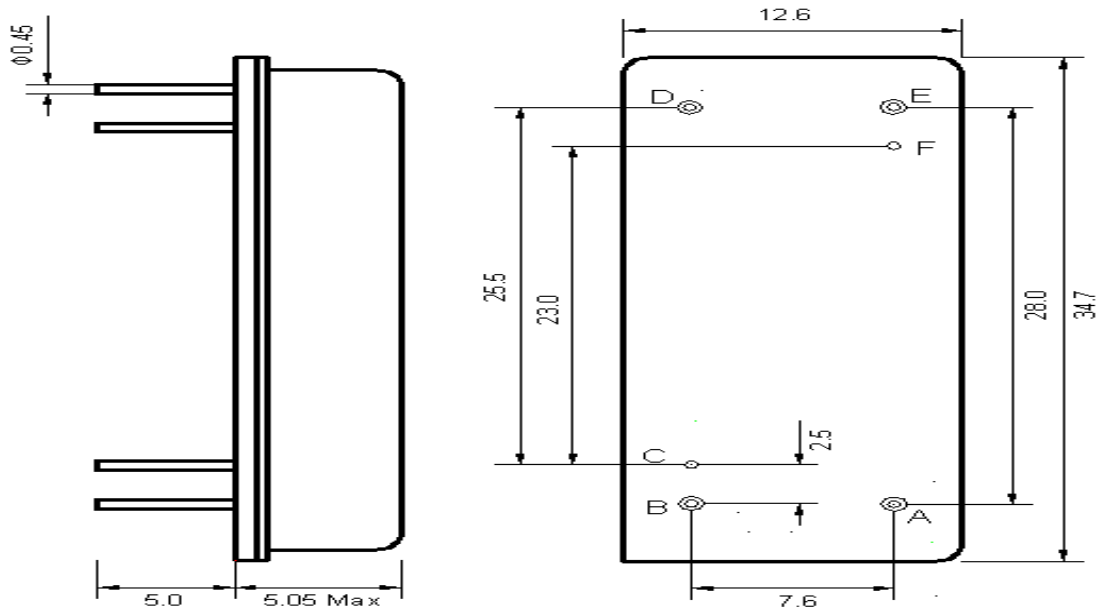
Electrical Specification

Parameters Description	Unit	Minimum	Typical	Maximum
Center Frequency (Fo)	MHz	69.94	70.00	70.06
Insertion Loss at Fo	dB	-	25.5	27.0
Group Delay Variation	nsec	-	55	100
Absolute Delay at Fo	usec	-	4.43	-
Passband Ripple Variation	dB	-	0.6	1.0
Bandwidth at -1dB	MHz	18.40	18.45	-
Bandwidth at -3dB	MHz	18.60	18.65	-
Bandwidth at -40dB	MHz	-	19.50	19.60
Bandwidth at -50dB	MHz	-	19.60	19.70
Ultimate Rejection	dB	50	55	-
Temperature Coefficient	ppm/°C	-	-72	-

Notes : (1) With Matching Network (Ref. Testing Environment Circuit as shown below).

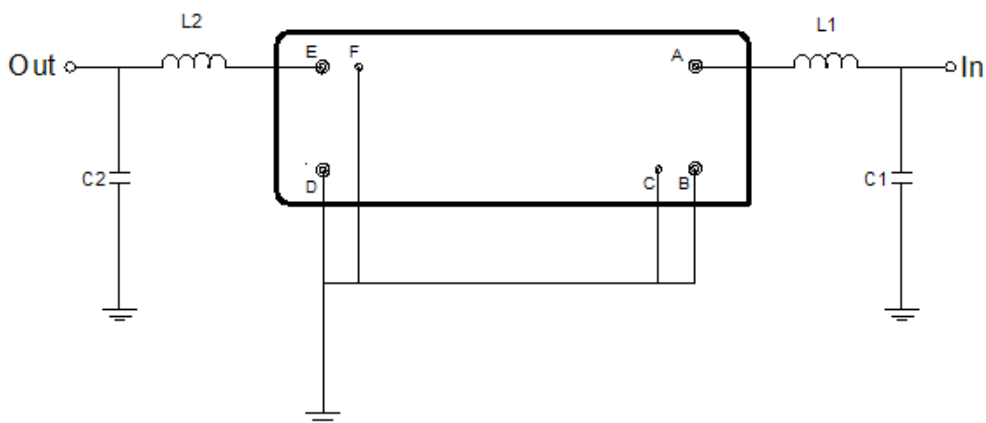
Those impedances could be modified with different impedance values and/or structures, if necessary.

□ Package Dimensions



Pin Description	
B, C, D, F	Ground
A	Input
E	Output

□ Testing Environment



Test Fixture & Values	
Input	L1 = 100 nH , C1 = 36 pF
Output	L2 = 120 nH , C2 = 0 pF
Source/Load Impedance	50 Ω